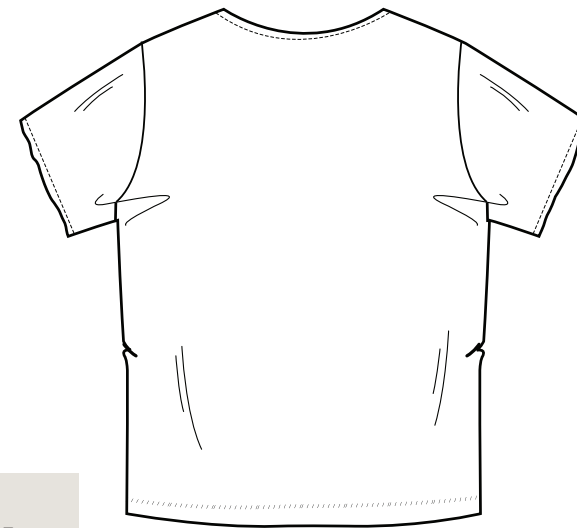


FRONT

Pocket Size

TOP POCKET WIDTH	10.5cm
BOTTOM POCKET WIDTH	10 cm
POCKET HEIGHT AT CENTER	12,5 cm
POCKET HEIGHT AT SIDE	10cm



BACK

SIZES		S	M	L	XL	XXL
A	Half Chest 2,5cm below armhole	47	50	53	56	59
B	Body Length (from HPS)	69,5	71,5	73,5	75,5	77,5
C	Sleeve length	19,5	20,5	21,5	22,5	23,5